

Ideally Flowable Paste and Excellent Usability

*Premixed Calcium hydroxide water-based paste
with Barium sulfate*

- *Easy and direct delivery into the root canal*
- *Excellent biocompatibility*
- *Excellent antimicrobial effects in the treatment of infected root canal*

The Chosen
*over a MILLION sets sold
in Japan for 10 years*

With 20
disposable
plastic needles

Flexible
needle

Non-blocking
needle tip

Easy-grip

INDICATIONS

For the treatment of infected root canals
After the extirpation of pulp
As a temporary root canal filling
As a root canal filling of deciduous teeth
For pulp capping of vital pulpotomy
For temporary pulp capping of exposed pulp

Ca(OH)₂ Water-Based Paste

Calcipex II

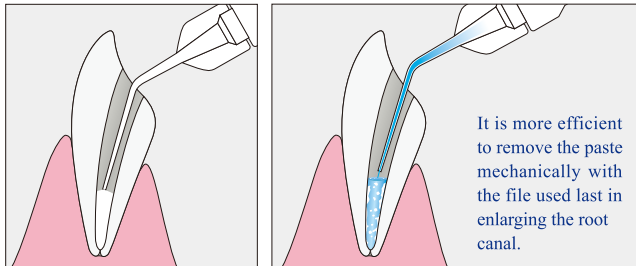
[Contraindication]

This product should not be used in the patients with a history of allergic reaction such as anaphylaxis or dermatitis to this product.

Easy to handle, premixed paste

- Easy and direct application into the root canals
- Highly flowable to reach the apical region
- The paste can be removed by irrigation with solutions of EDTA and sodium hypochlorite.
- Moderately radiopaque

1. Easy and direct application into the root canals
2. Removal of the paste by irrigation with solutions of EDTA and sodium hypochlorite.¹⁾



Excellent biocompatibility

- Less irritation to the periapical tissue
- Composed of resorbable ingredients. It does not disturb the healing of apical lesion and the formation of hard tissues.



Experiment & Result²⁾

The effect of the materials on the tissue response were histologically evaluated after regeneration in the bone cavity with apicectomy. Acute inflammatory reaction was not observed and new bone (NB) regeneration was found in the bone cavity. New bone was observed to form surrounding structures which seemed to be this material.

(P: dental pulp)

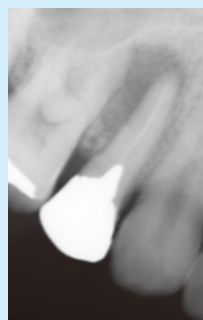
(photo: 6 weeks after filling)

New bone regeneration

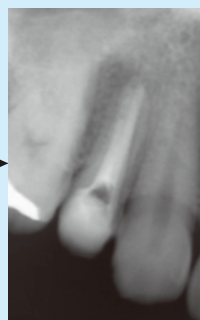
For the treatment of infected root canals

- Calcipex II can be applied to the cases with persistent endodontic exudate.
- The effect of calcium hydroxide lasts over a long period.

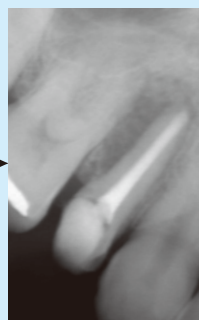
[Clinical case]



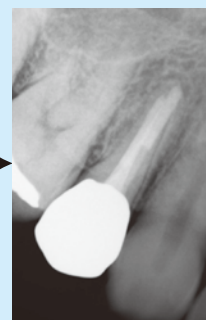
When first diagnosed:
Maxillary right first premolar
Chief complaint:
Gingival swelling
Periapical radiolucency was present.



Intra-canal medicament
Calcipex II



Just after root canal filling



18 months after root canal filling, periapical lesion disappeared.

Radiographic images provided by Department of Endodontology, Kyushu University Hospital

[Literatures]

1. SHIMA K., MAEDA H., GOTO Y., UNEMORI M., WADA N., FUJII S., TOMOKIYO A., AKAMINE A.: SEM images of root canal dentin irrigated with Smearclean: Comparison with ultrasonic irrigation, The Japanese Journal of Conservative Dentistry 49, 158 (in Japanese)
2. KIMURA A., HASHIGUCHI I., NAKAMUTA H., YOSHIMINE Y., AKAMINE A.: Histological examination of the biocompatibility of Calcipex II and Calcipex Plain II, The Journal of Japan Endodontic Association, Vol. 26 No.1 p. 50-56 January 2005. (in Japanese)

Packaging



A syringe of CalcipexII(2g)
20 needles of Nishika Spin (φ0.6mm)
1 needle cap

Distributor